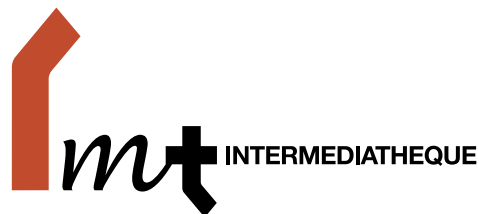


PRESS RELEASE



INTERMEDIATHEQUE
KITTE 2-3F, 2-7-2 Marunouchi, Chiyoda-ku,
Tokyo 100 7003 JAPAN
www.intermediatheque.jp

Special Exhibition

Intermediatheque Natural History Series <6>

The University of Tokyo & The University of Würzburg Special Collaborative Exhibition “125 Years of New Insights – Röntgen and the Discovery of the X-ray”

May 2020

At the JP Tower Museum INTERMEDIATHEQUE, the special exhibition “125 Years of New Insights – Röntgen and the Discovery of the X-ray” was originally scheduled to open on April 18, 2020. For the time being, a PDF version of the catalogue will be available free of charge on this website.

Wilhelm Conrad Röntgen discovered the X-ray on November 8, 1895. The present exhibition is organized by the University of Tokyo and Julius-Maximilians-University Würzburg (University of Würzburg) to commemorate the 125th anniversary of the discovery. It features about 30 precious items related to W.C. Röntgen, mainly from the invaluable scientific heritage of University of Würzburg, to present the social impact of the X-ray’s discovery as well as Röntgen’s personality.

Key Information

[Title] The University of Tokyo & The University of Würzburg Special Collaborative Exhibition
“125 Years of New Insights – Röntgen and the Discovery of the X-ray”

[Dates] **The museum is currently closed to prevent the further spread of the Coronavirus (COVID-19).
The exhibition is planned to start when the museum reopens.**

[Opening Hours] 11:00 – 18:00 (open until 20:00 on Fridays and Saturdays) *Opening hours may change.

[Closed on] Mondays (or the following Tuesday if Monday is a National Holiday). May close irregularly.

[Venue] Intermediatheque 2F [FIRST SIGHT]

[Organizer] The University Museum, the University of Tokyo (UMUT) + University Archives,
Julius-Maximilians-University Würzburg

[Cooperation] German Physical Society + German Röntgen Museum, Remscheid + Komaba Museum,
the University of Tokyo

[Admission] Free of charge

[Address] KITTE 2-3F, 2-7-2 Marunouchi, Chiyoda-ku, Tokyo, JAPAN

[Access] JR lines and Tokyo Metro Marunouchi line Tokyo Station (Marunouchi South Exit). Nijubashimae Station (Exit 4) on the Chiyoda Line (about 2 minutes on foot).

The PDF version of the exhibition catalogue is available on the following URL:

http://www.um.u-tokyo.ac.jp/IMT/attachments/download/6100/2020_Roentgen%20_catalogue.pdf

Intermediatheque Official Website>RESEARCH>PUBLICATIONS>2020

The University of Tokyo & The University of Würzburg Special Collaborative Exhibition “125 Years of New Insights – Röntgen and the Discovery of the X-ray”

<http://www.intermediatheque.jp/en/database/publication>

Publications

- Exhibition catalogue
- Card leaflet
- Poster

Contact

+81-47-316-2772

From Japan: 050-5541-8600 (NTT Hello Dial Service)

Main Exhibits

1.

The old university building of Julius-Maximilians-University Würzburg / Julius von Leybold / 1603 / Copperplate engraving in glass and wooden frame / W385×L355mm / University Archives Würzburg

2.

Portrait of Röntgen as Rector Magnificus of Julius-Maximilians-University Würzburg 1893–1894 / Photograph, damaged in World War II (reprint) / W205×L245mm / University Archives Würzburg

3.

Radiograph of the hand of Anna Bertha Röntgen / Wilhelm Conrad Röntgen / December 22, 1895 / Radiograph, cardboard / W125×L175mm / University Archives Würzburg

4.

Photograph of X-rayed objects: weight measure set in a closed wooden case / Wilhelm Conrad Röntgen / 1895 / Radiograph, cardboard / W120×L90mm / University Archives Würzburg

5.

Radiograph of a fieldfare (*Turdus pilaris*) / Date unknown / Radiograph, cardboard / W250×L325mm / University Archives Würzburg

レントゲン
——
新種の光線について

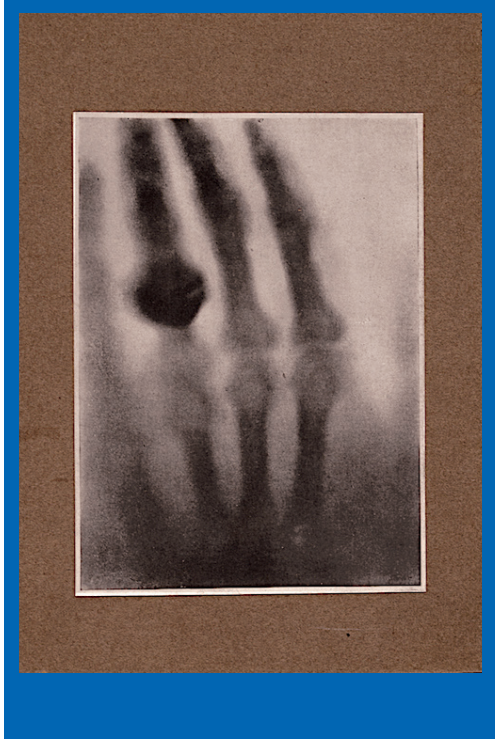
インターメディアテク博物館シリーズ(6) / 東京大学Ⅱヴェルツブルク大学連携特別展示



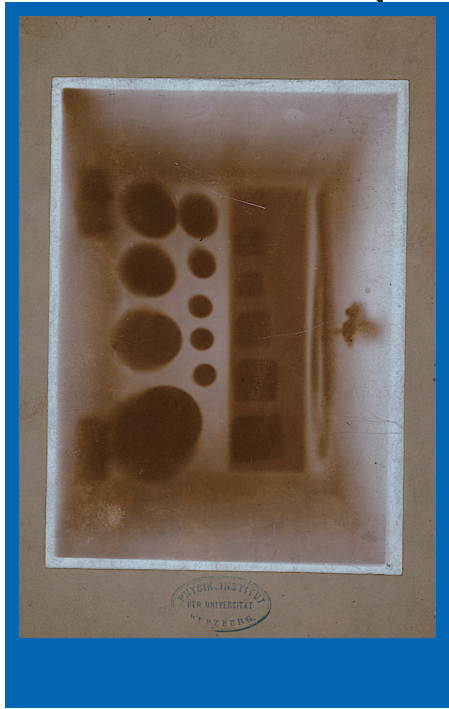
1



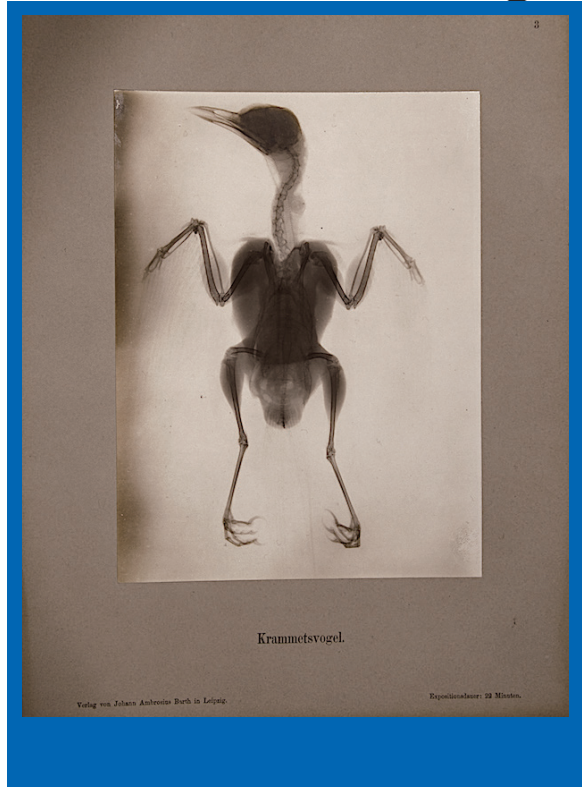
2



3



4



5