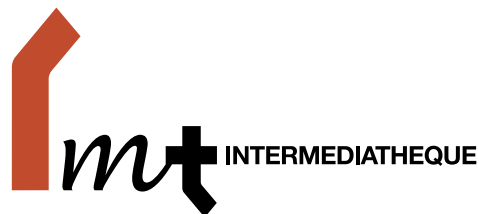




PRESS RELEASE




INTERMEDIATHEQUE
KITTE 2-3F, 2-7-2 Marunouchi, Chiyoda-ku,
Tokyo 100 7003 JAPAN
www.intermediatheque.jp

Special Exhibition

Intermediatheque Natural History Series <7>

“Body/Form—Anatomical Wall Charts from the University of Tokyo”

February 2021



For the seventh instalment of the ongoing Intermediatheque Natural History Series, we are holding the special exhibition “Body/Form—Anatomical Wall Charts from the University of Tokyo.” This exhibition makes the anatomical wall charts from the University of Tokyo’s Graduate School of Medicine and Faculty of Medicine collection available to the public, as an opportunity to rethink pictorial representations of the human body in modern anatomical charts. The exhibition is held as a series, each time featuring around twenty examples of hand-drawn historical wall charts.

Key Information

[Title] Special Exhibition: Intermediatheque Natural History Series <7> “Body/Form—Anatomical Wall Charts from the University of Tokyo”

[Dates] March 6, 2021 –

[Opening Hours] 11:00-18:00 (open until 20:00 on Fridays and Saturdays) *Opening hours may change.

[Closed on] Mondays (or the following Tuesday if Monday is a National Holiday). May close irregularly.

[Venue] Intermediatheque 3F [MODULE]

[Organizer] The University Museum, the University of Tokyo (UMUT)

[Co-organizer] Medical Museum, Graduate School of Medicine and Faculty of Medicine, The University of Tokyo

[Admission] Free of charge

[Address] KITTE 2-3F, 2-7-2 Marunouchi, Chiyoda-ku, Tokyo, JAPAN

[Access] JR lines and Tokyo Metro Marunouchi line Tokyo Station (Marunouchi South Exit). Nijubashimae Station (Exit 4) on the Chiyoda Line (about 2 minutes on foot).





Main Exhibits

1.

Muscles of Head

Date unknown / Hanging scroll, watercolor on paper / 787×1234mm / Graduate School of Medicine and Faculty of Medicine, The University of Tokyo

2.

Muscles of Right Lower Leg

Date unknown / Hanging scroll, watercolor on paper / 784×1220mm / Graduate School of Medicine and Faculty of Medicine, The University of Tokyo



3.

Coronal Section of Head

Date unknown / Hanging scroll, watercolor on paper / 788×1236mm / Graduate School of Medicine and Faculty of Medicine, The University of Tokyo

Contact

+81-47-316-2772

From Japan: 050-5541-8600 (NTT Hello Dial Service)

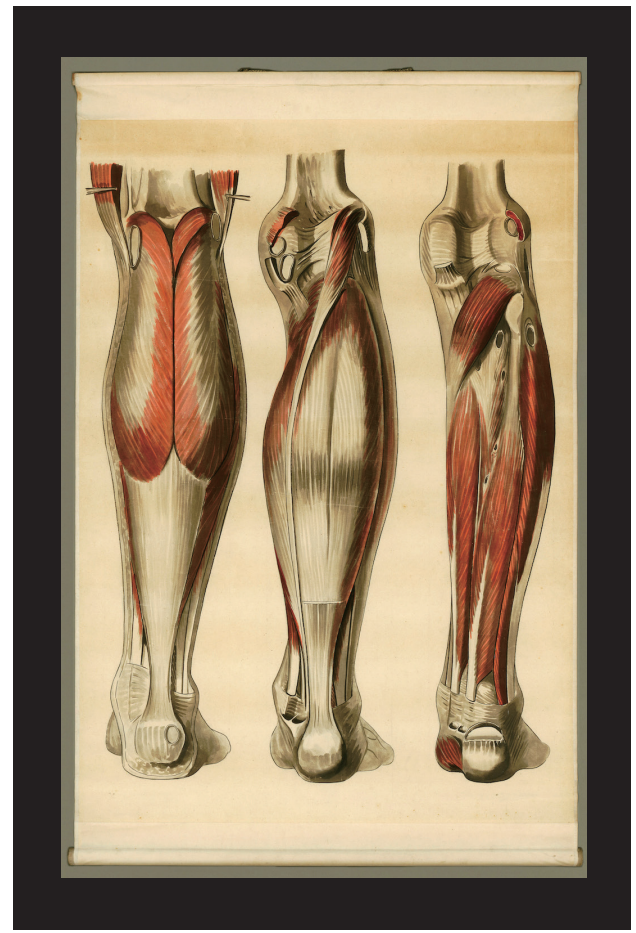
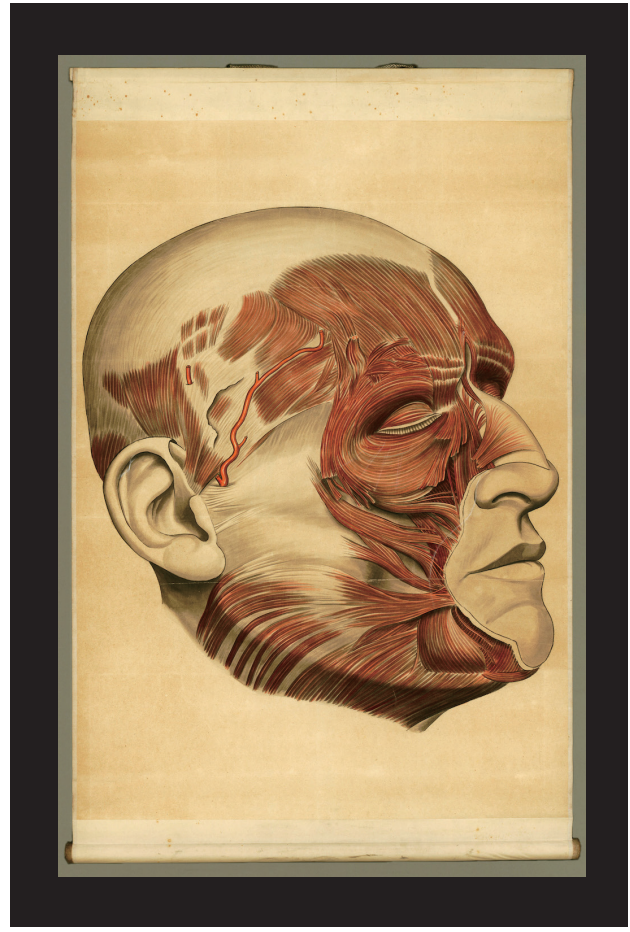


からだの解剖学掛図
ち形状

東大医学解剖学掛図

Body/Form—Anatomical Wall Charts from the University of Tokyo

1



2

3

